

Universal Couchtop™

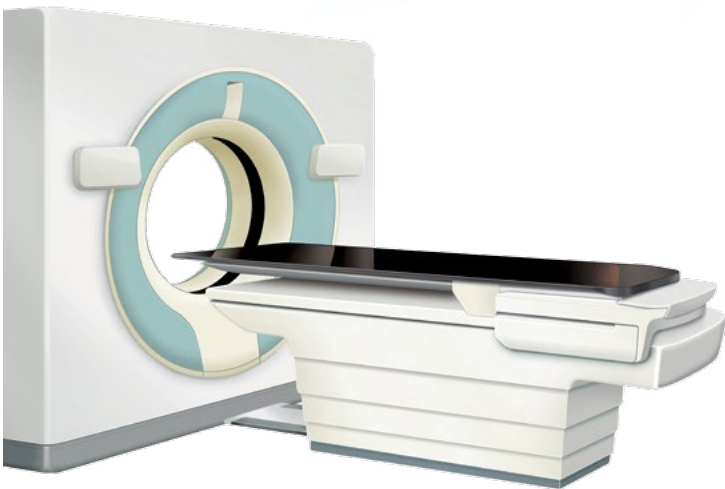
for safe, efficient treatment planning + imaging



Universal Couchtop™
Long Extension



Universal Couchtop™
1 Piece



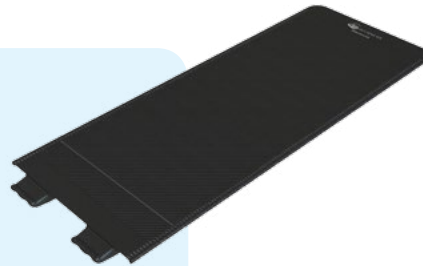
CIVCO®
Radiotherapy
a better way

Extensions to Treat Many Disease Sites

Universal Couchtop™ allows full flexibility with seven extension options to treat many patients and disease sites throughout the day. The couchtop features a unique profile allowing for easy attachment of all CIVCO Body Pro-Lok™ SBRT bridges and additional extension options for trUpoint ARCH™ SRS/SRT, head & neck and other treatment types.

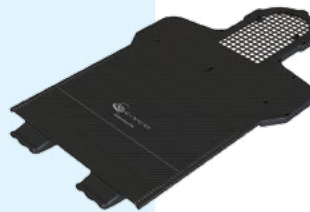
Rectangular Extension

- Body Pro-Lok SBRT enabled
- Optional Rectangular Extension with embedded wires ensures patient alignment



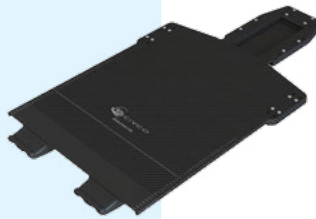
Type-S™ Extension

- Compatible with Type-S Thermoplastics, including the ClearVision™ open face mask designed for use with vision/camera systems
- Body Pro-Lok SBRT enabled



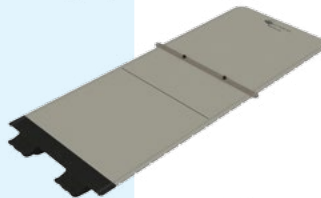
Posifix® Extension

- Compatible with Posifix Thermoplastics and trUpoint ARCH SRS/SRT System
- Body Pro-Lok SBRT enabled



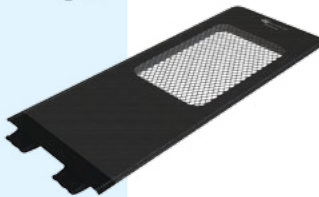
Kevlar Extension

- Compatible with Varian's Calypso® System
- Body Pro-Lok SBRT enabled



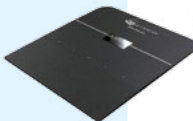
Grid Extension

- Helps minimize surface dose and skin reactions
- Body Pro-Lok SBRT enabled



UCT Head Extension

- Extends the patient an additional 17 cm



Varian End Plate

- Allows the use of various QA and SRS devices.



Body Pro-Lok ONE™ Body Pro-Lok™

All Long Extensions (SBRT Immobilization)



trUpoint⁺
ARCH™

Posifix Extension (SRS/SRT Immobilization)



Type-S™ & Posifix® Extensions
(Head & Neck Positioning)

Junction, Rail and Artifact-free

The Universal Couchtop™ is a modern and comprehensive solution for enabling advanced treatments in your clinic. Specifically designed to answer the demands of IGRT delivery, the Universal Couchtop Long Extension contains no rails or junctions in the treatment area to help facilitate better dose delivery and target coverage.

- Large treatment area of 47 inches (119 cm)
- Utilizes Prodigy™ 2 indexing at 7 cm increments
- Low attenuation and surface dose
- Self-locking extension seam located outside of treatment field
- Convenient wall storage device (below) holds up to four extensions



"The implementation of UCT has allowed us to introduce kV and CBCT imaging on our treatment units. It is the preferred treatment unit for all complex patients including head and neck and lung treatments."

- Aniko Cooper, Director of Radiation Therapy Services,
North Queensland Oncology Service,
Douglas, Australia

"We really love our new UCT. It saves a lot of work, and I feel more confident with the weight limit as opposed to our old table to accommodate different types of setups, and now we don't."

-Susan Chamberlin, R.T.T.,
Buckeye Radiation Oncology, Columbus, Ohio

Dosimetrically Matched Universal Couchtops™

Universal Couchtop is available in dosimetrically matched couchtops for most major CT and Linac models to provide seamless transition from simulation to treatment.

Reduce set-up and treatment errors

Installing the same Universal Couchtop on all department pedestals also will offer:

- Dose attenuation
- Deflection
- Indexing
- Immobilization device attachment

Scan or treat patients on any CT or Linac

Installing matching couchtops allows patients to be scanned or treated on any CT or Linac as required. This is ideal when machines are down or departments are trying to manage patient throughput.

VARIAN
ELEKTA

GE
PHILIPS

SIEMENS
TOSHIBA

“CIVCO’s dosimetrically matched Universal Couchtops give us more confidence in dose calculations when planning patients who will be treated on the linac. Not having to use overlays has definitely provided us additional conveniences.”

- Brian Smaga, Radiation Therapist, Agnesian Healthcare, Fond Du Lac, Wisconsin

“One can minimize or even eliminate the effort needed to model the couch by installing matching couch tops in the CT simulator and linear accelerator.”

- AAPM Task Group 176

Universal Couchtop 1 Piece

The Universal Couchtop 1 Piece is an ideal IGRT and SBRT solution with a uniform design and no junctions. This couchtop offers a dosimetrically matched couchtop for most major CT and Linac models.

- No extension or seams
- Low attenuation and surface dose
- Economic option for facilities with multiple linear accelerators and CTs
- Allows for attachment of Body Pro-Lok™ SBRT bridges and accessories for SBRT Immobilization
- Utilizes Prodigy™ 2 indexing at 7 cm increments



UCT LE Statistics

Load Rating

Entire System: 220 kg/484 lbs
 Extension Only: 178 kg/392 lbs

Attenuation

6MV

Gantry	Transmission (10 x 10)	Transmission (5 x 5)
180°	0.971	0.969
200° / 160°	0.968	n/a
210°	0.967	n/a
220° / 140°	0.962	n/a

Surface Dose

	6MV 10 x 10	6MV 20 x 20	18MV 10 x 10	18 MV 20 x 20
Open Field	19.1%	30.5%	16.1%	20.6%
UCT LE	94.1%	97.2%	69.9%	79.4%
Posi Extension P1	82.6%	89.7%	56.9%	69.4%
Posi Extension P2	89.6%	93.2%	64.6%	73.6%



Attenuation and surface dose values are approximate due to variation in machine characteristics.

UCT 1 Piece Statistics

Load Rating

Entire System: 200 kg/444 lbs

Attenuation

6MV

Gantry	Transmission (10 x 10)	Transmission (5 x 5)
180°	0.971	0.969
200° / 160°	0.968	n/a
210°	0.967	n/a
220° / 140°	0.962	n/a

Surface Dose

	6MV 10 x 10	6MV 20 x 20	18MV 10 x 10	18 MV 20 x 20
Open Field	19.1%	30.5%	16.1%	29.6%
UCT 1 Piece	94.1%	97.2%	69.9%	79.4%

Deflection

- The Universal Couchtop Long Extension contributes less than 1 mm of deflection to the system following IEC 60976 (2007) Section 15.2.2
- The Universal Couchtop 1 Piece meets the deflection standards and requirements of IEC 60976 (2007) Section 15.2.2 on the Varian Exact® couch



CIVCO

Radiotherapy

Global Sales Office
1401 8th Street SE
Orange City, IA 51041
800.842.8688 | +1 712.737.8688
info@civcort.com | www.civcort.com

COPYRIGHT © 2016. CIVCO AND POSIFIX ARE REGISTERED TRADEMARKS OF CIVCO MEDICAL SOLUTIONS. BODY PRO-LOK, BODY PRO-LOK ONE, CLEARVISION, DOSEMATCH TECHNOLOGY, PRODIGY, TRUPPOINT ARCH, TYPE-S AND UNIVERSAL COUCHTOP ARE TRADEMARKS OF CIVCO. ALL OTHER TRADEMARKS ARE PROPERTY OF THEIR RESPECTIVE OWNERS. ALL PRODUCTS MAY NOT BE LICENSED IN ACCORDANCE WITH CANADIAN LAW. 2016P1108 REV.A